

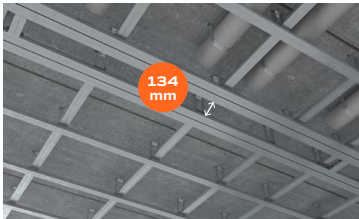
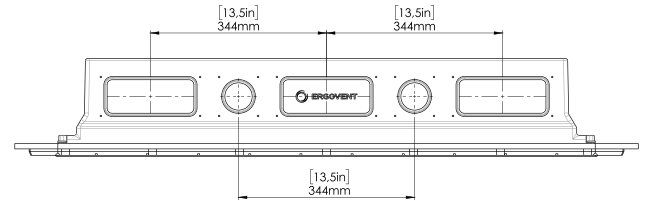
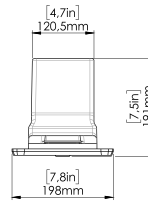
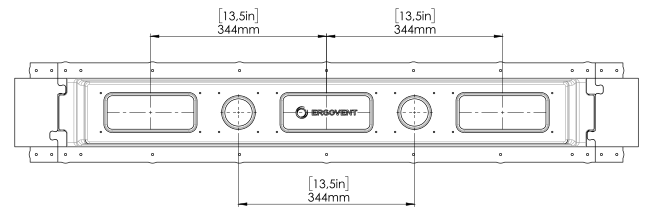
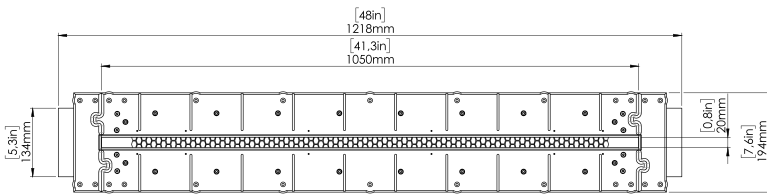
LINEO-PRO CONDI 125

Hidden linear diffuser for air-conditioning applications



125 mm connections / 1 slot × 1050 mm × 20 mm

Hidden linear **ventilation/air-conditioning diffuser** for installation in gypsum board (drywall) ceilings. After installation, the diffuser is plastered flush and painted the same color as the ceiling or wall. Only a minimalist slot remains visible, serving as a discreet interior design detail. Units can be linked in a continuous line with other PUZZLE diffusers featuring 75 mm or 90 mm duct connections. The pressurized plenum/connection box is made from **moulded EPP material**, which delivers exceptional thermal-insulation performance. As a result, the diffuser is suitable not only for ventilation but also for air-conditioning.



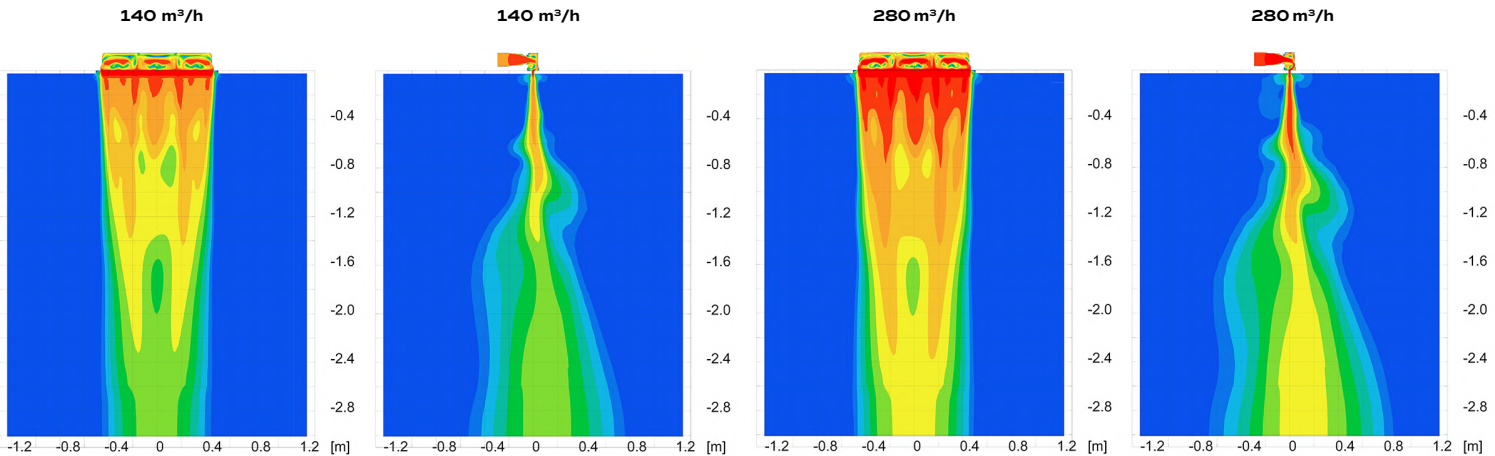
Installation width between profiles:
134 mm / ≈ 5.28 in

Minimum installation height:
191 mm / ≈ 7.52 in

Patented technical solution: the PUZZLE LOCK system allows diffusers to be connected.

Important: During installation, all fixing screws must be fully tightened.

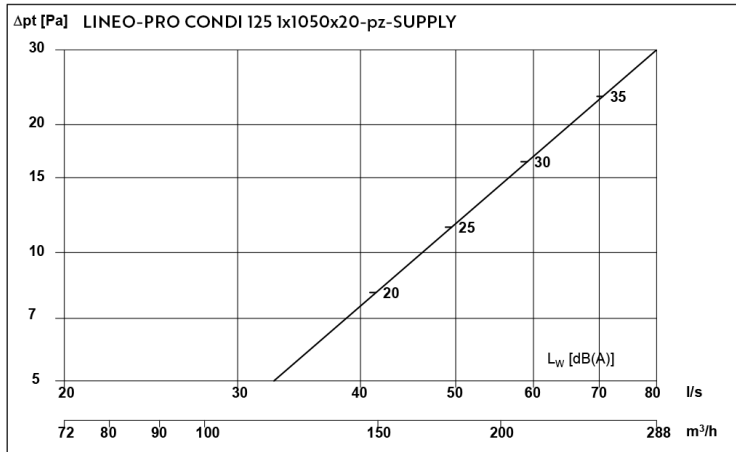
THROW DISTANCE



FLOW NOISE (in accordance with ISO 3741) and PRESSURE DROP test report

SUPPLY

Diagram for pressure and flow noise:



$$L_{Woct} [dB] = L_{WA} + K_{Oct}$$

q [l/s]	Dp _t [Pa]	L _{WA} [dBA]		63 Hz	125 Hz	250 Hz	500 Hz	1000 Hz	2000 Hz	4000 Hz	8000 Hz
-	-	33									
			K _{Oct}	-5	1	3	-1	-7	-13	-21	-31

Octave correction factors to the diagram are calculated at the listed value of either q, Δp_t or L_{WA}/L_{DA}

Calculation of pressure and sound effect according to flow:

Sound effect: $L_{W(oct \text{ or } A)} = k \cdot \log(q) + L_0$ L_W - sound effect [dB] q - flow [l/s]
 k - factor, sound effect [-] K_{factor} - factor, balancing [l/(s·√Pa)]

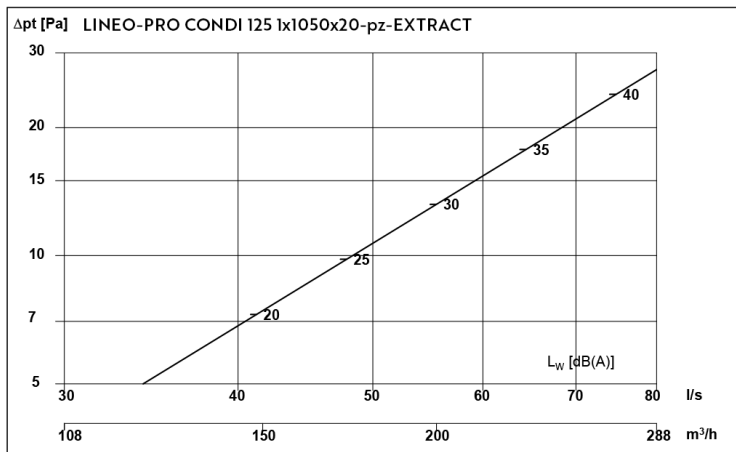
Total pressuredrop: $\Delta p_t = c_{pt} \cdot q^2$ L₀ - addend, sound effect [-] p_i - pressuredifference, balancing [Pa]
 Δp_t - total pressuredrop [Pa]

Balancing: $q = K_{factor} \cdot \sqrt{p_i}$ c_{pt} - factor, total pressuredrop [Pa·s²/l²]

Total p C _{plot}	Balancing K-factor		L _{WA}	63 Hz	125 Hz	250 Hz	500 Hz	1000 Hz	2000 Hz	4000 Hz	8000 Hz
0.0047	Not measured	k Lo	65.0 -85.2	46.8 -56.5	39.1 -36.5	46.3 -47.8	51.0 -60.0	67.5 -95.9	96.7 -155.5	115.8 -197.8	116.5 -209.1

EXTRACT

Diagram for pressure and flow noise:



$$L_{Woct} [dB] = L_{WA} + K_{Oct}$$

q [l/s]	Dp _t [Pa]	L _{WA} [dBA]		63 Hz	125 Hz	250 Hz	500 Hz	1000 Hz	2000 Hz	4000 Hz	8000 Hz
-	-	33									
			K _{Oct}	-7	1	0	2	-11	-21	-24	-30

Octave correction factors to the diagram are calculated at the listed value of either q, Δp_t or L_{WA}/L_{DA}

Calculation of pressure and sound effect according to flow:

Sound effect: $L_{W(oct \text{ or } A)} = k \cdot \log(q) + L_0$ L_W - sound effect [dB] q - flow [l/s]
 k - factor, sound effect [-] K_{factor} - factor, balancing [l/(s·√Pa)]

Total pressuredrop: $\Delta p_t = c_{pt} \cdot q^2$ L₀ - addend, sound effect [-] p_i - pressuredifference, balancing [Pa]
 Δp_t - total pressuredrop [Pa]

Balancing: $q = K_{factor} \cdot \sqrt{p_i}$ c_{pt} - factor, total pressuredrop [Pa·s²/l²]

Total p C _{plot}	Balancing K-factor		L _{WA}	63 Hz	125 Hz	250 Hz	500 Hz	1000 Hz	2000 Hz	4000 Hz	8000 Hz
0.0043	Not measured	k Lo	77.4 -105.0	55.1 -71.9	37.7 -33.2	75.1 -100.8	77.4 -103.0	75.0 -111.6	88.9 -146.2	84.2 -141.2	85.7 -150.1